



Center for Social  
Innovation

Emily Psara

Senior Project Manager



[emily.psara@csicy.com](mailto:emily.psara@csicy.com)



# Center for Social Innovation



## Center for Social Innovation



[www.csicy.com](http://www.csicy.com)



[info@csicy.com](mailto:info@csicy.com)



Rigenis 62, Nicosia, 1010,  
Cyprus



Center for Social Innovation Cyprus - CSICY



CSI.CYPRUS



csi\_cy



**HerStory**  
- Combating gender  
stereotypes by highlighting  
women's contribution to the  
history of societies



Co-funded by  
the European Union

Project number: 101087984



Center for Social  
Innovation

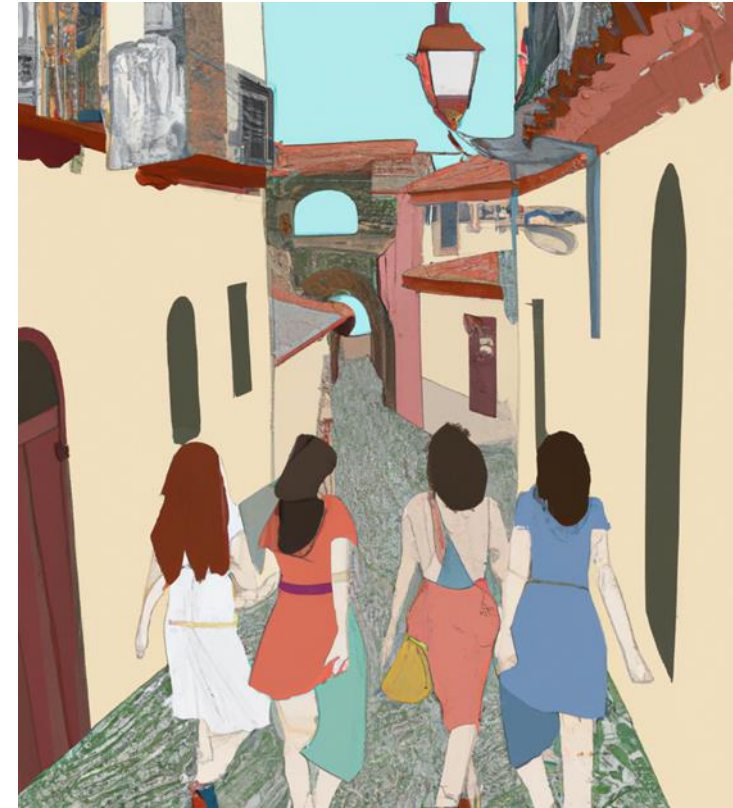
# The HerStory team

- UNIVERSIDAD DE SALAMANCA, [USAL], Salamanca, Spain
- D'ANTILLES ET D'AILLEURS [DA&DA], Fort-de-France, France
- SYMVOYLEYTIKO KENTRO STIRITHIS TIS OIKOGENEIAS [SYKESO], Nicosia, Cyprus
- KYTTARO ENALLAKTIKON ANAZITISEON NEON [KEAN], Athens, Greece
- VAZMOZHNOСТИ BEZ GRANITSI [IOA], Sofia, Bulgaria
- ANDRAGOSKI ZAVOD LJUDSKA UNIVERZA VELENJE [LUV], Velenje, Slovenia
- CSI CENTER FOR SOCIAL INNOVATION LTD [CSI], Nicosia, Cyprus
- VSI DIVERSITY DEVELOPMENT GROUP [DDG], Vilnius, Lithuania
- SPECCHIO MAGICO COOPERATIVA SOCIALE ONLUS [SM], Monte Marenzo, Italy



# Understanding the Need

- Traditionally, the field of history was guided by a male dominated perspective.
- Historiography lacks basic information about women's action in history.
- Women's contribution to society and the struggles for women's rights remain largely invisible.



Importance of historical representation: By focusing on women's triumphs and normalizing the success through the public display of women's statues and monuments, these historical misconceptions and misrepresentations can be addressed.

# Our ambitions



Unveiling HerStory: A transnational solution to gender-based stereotypes

Shining a light on women's history: HerStory's contribution to gender equality

# Components of HerStory

- **Research and Documentation:** Research and Mapping Local Women Histories
- **Development of HerStory Map, Online Platform and Mobile App**
- **Exploring HerStory Map:** Learning and Training Activities Implementation
- **Dissemination and Sustainability**

# Research and Mapping Women Histories



Research and Mapping



Focus Group with Stakeholders



Focus Group with Young People



# Key Findings

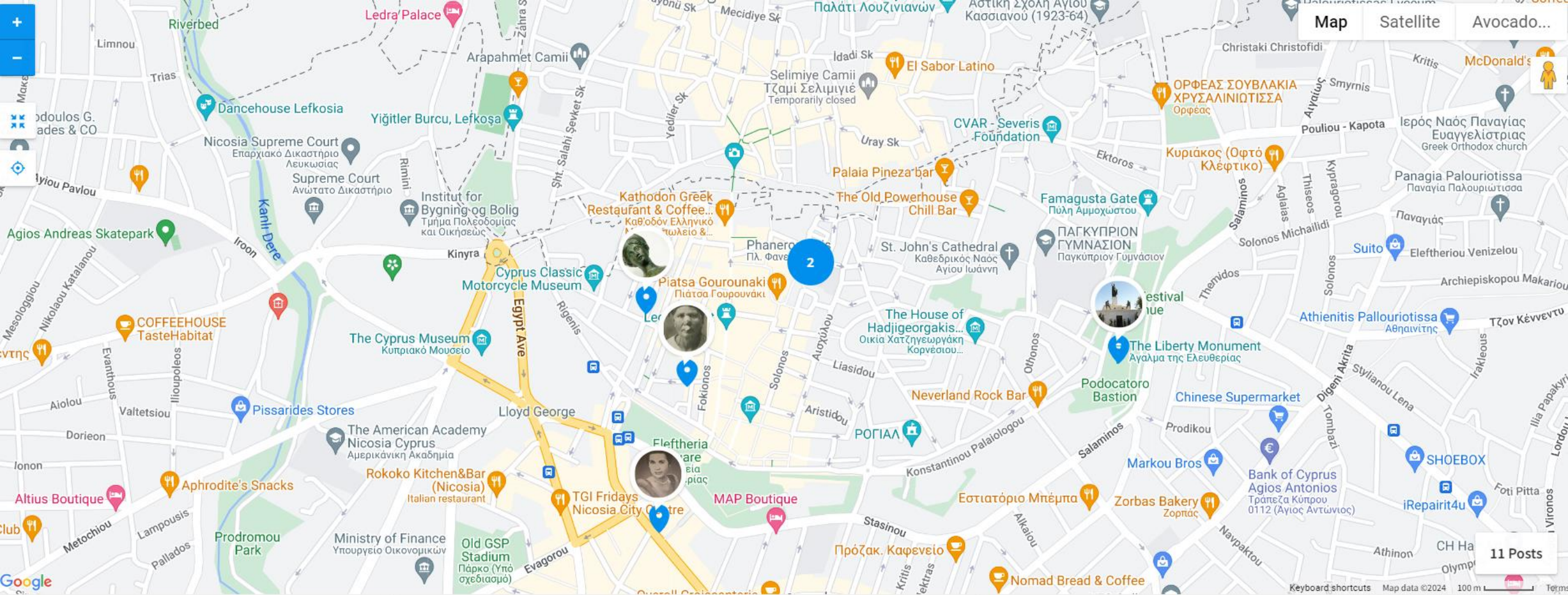
- Both **stakeholders** and **young individuals** actively contributed feedback regarding the **relevance and portrayal of women in historical contexts**. This inclusive dialogue shed light on the hurdles associated with effectively incorporating gender perspectives into historical narratives and educational frameworks.
- Educational Resources: Educational resources are **deficient** and **outdated** in terms of **highlighting women's contributions to history**.
- Educational Initiatives: The European Report highlighted the importance of **integrating gender perspectives** seamlessly **into educational curricula and public historical narratives**, promoting a more inclusive understanding of history.

# The HerStory Map

## Development of HerStory Map, Online Platform, and Mobile App:

- This work package builds upon the outcomes of the research to create a transnational women's history map accessible via an online platform and mobile app.
- The map will feature information and photos of noteworthy women, alongside engaging activities for exploration.





**Zena Palace – Theogn...**

Zena Palace is one of the first cinemas that existed in Cyprus, located in the center

**Liberty Monument**

The Liberty Monument was erected in 1973 to honor the fighters of EOKA during the

**Cleovoulou Street**

Cleovoulou Street got its name from Cleovoulou, an important historical figure

**Arsinoiyis Street**

The Arsinoyis Street took its name from Arsinoyi, a historical figure from ancient

**Pancyprian Federatio...**

The "Pancyprian Federation of Women's Organizations" is an organization founded in

**Catherine Cornaro**

Catherine Cornaro was the Queen of Cyprus and the wife of Peter I of Cyprus. Their

**The Shelter for workin...**

The Shelter for Working Women in Cyprus serves as a vital support system for

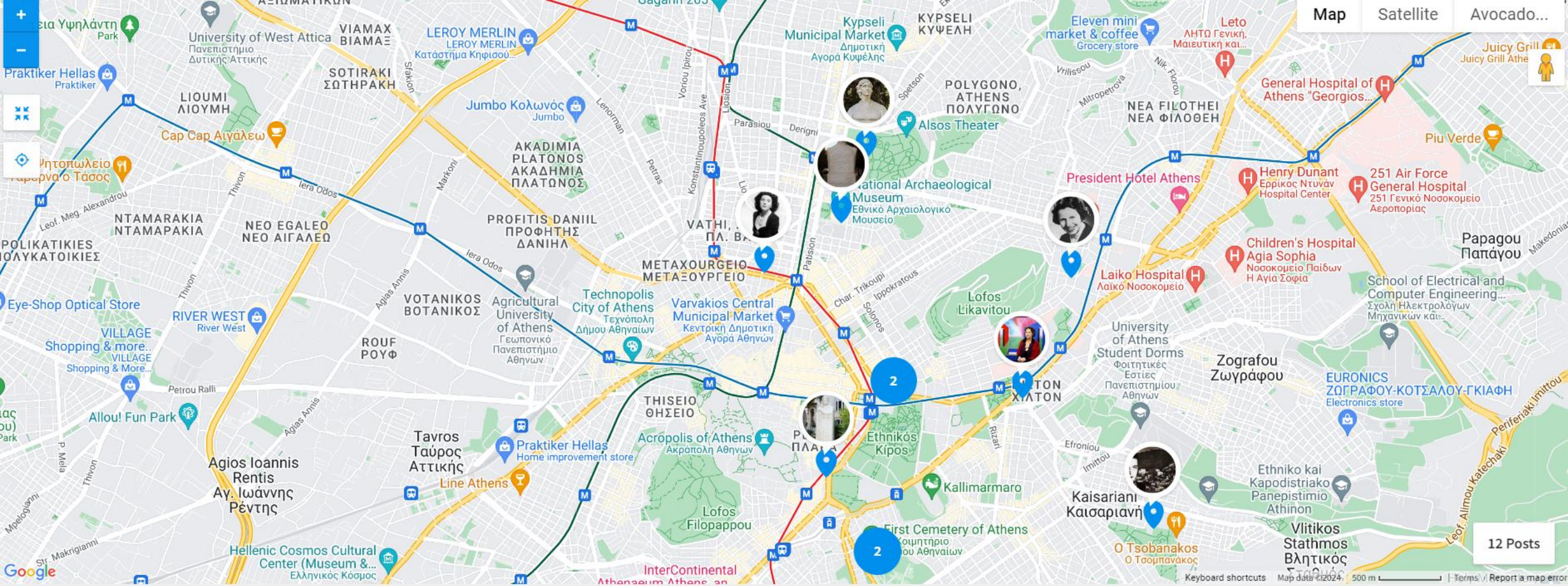
**Diamantou Charalam...**

During the period that Cyprus was under British Colonial. Back on these

# HerStory map of Nicosia



Center for Social Innovation



<p><b>Lela Karagianni's Bust...</b></p> <p>Lela Karagianni's bust in Evarcheia square was made in 1958, funded by the</p>	<p><b>Experimental Special ...</b></p> <p>This Special Primary School is named by Roza Imvrioti. Roza Imvrioti (1898-1977) was</p>	<p><b>National Gallery - Opi ...</b></p> <p>Greek National Gallery was built in 1900 in Athens. It hosts more than 15000</p>	<p><b>Marble Plaque of Anti...</b></p> <p>This plaque was placed in honor of the educator Antigoni Metaxa - Kronitira or</p>	<p><b>Paxinos - Minotis Mus...</b></p> <p>The Paxinou-Minotis Museum is a museum in Athens that is devoted to the Greek film</p>	<p><b>Manto Mavrogenous' ...</b></p> <p>Manto Mavrogenous' bust was made in 1937 and is located in Pedio tou Areos. It</p>	<p><b>Sappho's Statue - On...</b></p> <p>The statue of Sappho in Athens was made by Antoine Bourdelle and is located in</p>	<p><b>Sofia Vembo's grave</b></p> <p>Efi Bembou, known professionally as Sofia Vembo, was a leading Greek</p>
---	--	--	--	--	--	---	---

# HerStory map of Athens



Center for Social Innovation

# Exploring the HerStory Map

- **Pilot implementation and fine tuning of the HerStory Map physical excursion:** Each partner will pilot the HerStory Map with a group of at least 10 participants from the target group.
- **HerStory Map physical excursion:** The partners will involve at least 160 participants, members of the direct target group in the physical excursion of the HerStory Map at each partner city.
- **HerStory Map physical excursion evaluation:** The partners will develop tailor made questionnaires through which the participants of the HerStory excursion will evaluate the experience they had, the knowledge they gained etc.

# Horizontal strategies to ensure Gender Mainstreaming

- **Gender-Inclusive Language:** Ensuring that project management documents, communication materials, and deliverables use gender-inclusive language that avoids reinforcing stereotypes or excluding any gender.
- **Diverse Partnerships:** Collaborating with partners from diverse backgrounds to ensure a holistic approach to gender equality.
- **Inclusive Planning:** Ensuring that project planning and design take into account the diverse needs, experiences, and perspectives of both women and men.
- **Monitoring and Evaluation:** Regularly reviewing and analyzing the materials to assess the project's impact on women and men, identify any gender-related barriers or challenges, and make adjustments as needed.

# Horizontal strategies to ensure Gender Mainstreaming

- **Awareness Campaigns:** Our media campaigns raise awareness about women's historical achievements, promoting gender equality.
- **Capacity Building:** Empowering participants to identify and combat gender inequalities, thereby contributing to the broader goal of gender mainstreaming by equipping individuals with the knowledge and tools to promote gender equality in their respective fields and communities.
- **Global Relevance:** Our ambition is to develop methods and tools that can be applied globally, underscoring our commitment to gender mainstreaming as a universal issue.



Combating gender stereotypes by highlighting women's contribution to the history of societies

[Home](#) [About the project](#) [Project results](#) [Project partners](#) [Presentations](#) [News](#) [Contact](#) [Language](#) ▾



*HerStory*

Combating gender stereotypes by highlighting women's contribution to the history of societies



**HerStory Website: <https://herstoryproject.eu/>**



**Center for Social Innovation**



Stay in contact!

**Emily Psara**

**Senior Project Manager**



[emily.psara@csicy.com](mailto:emily.psara@csicy.com)



Center for Social  
**Innovation**